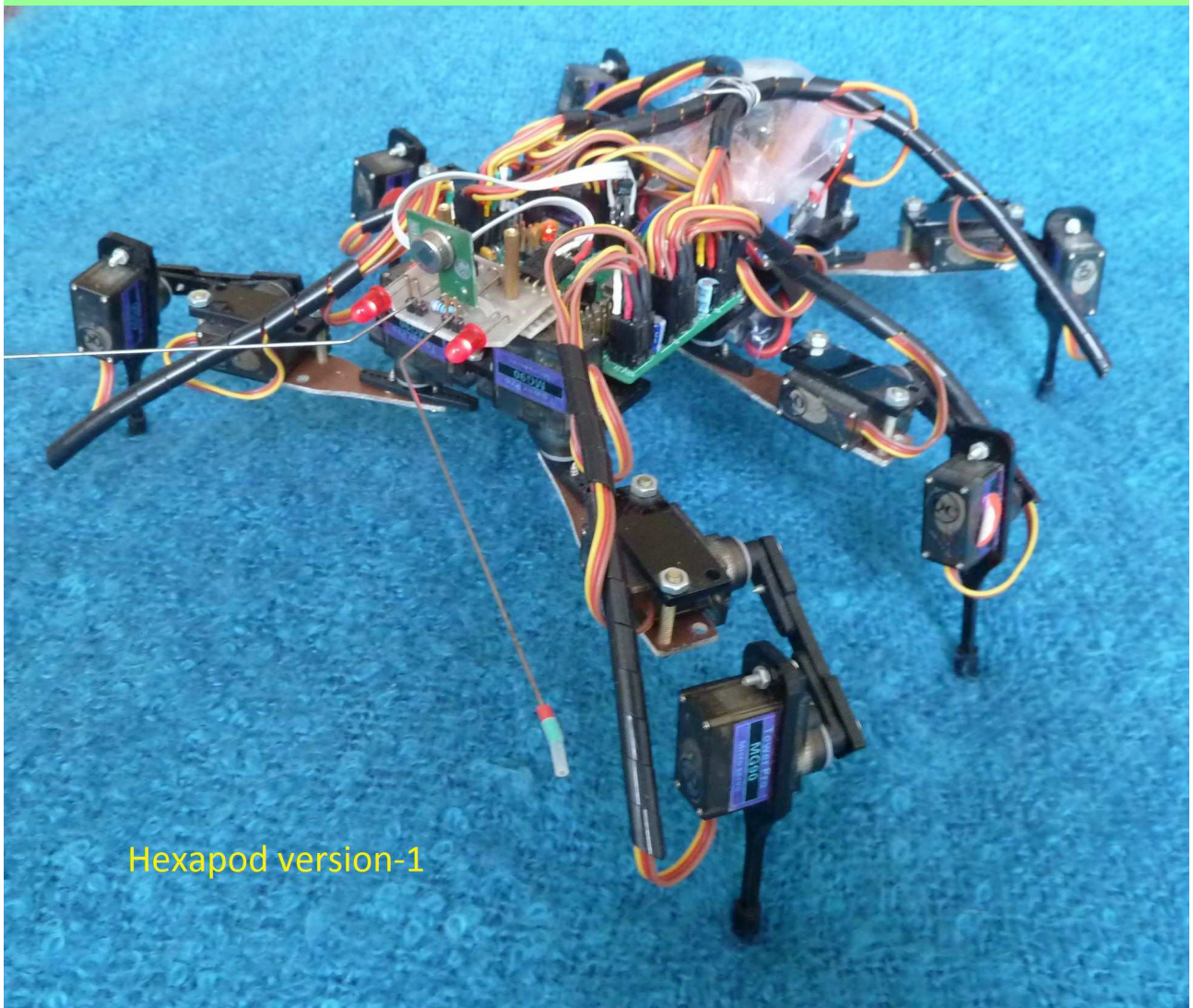


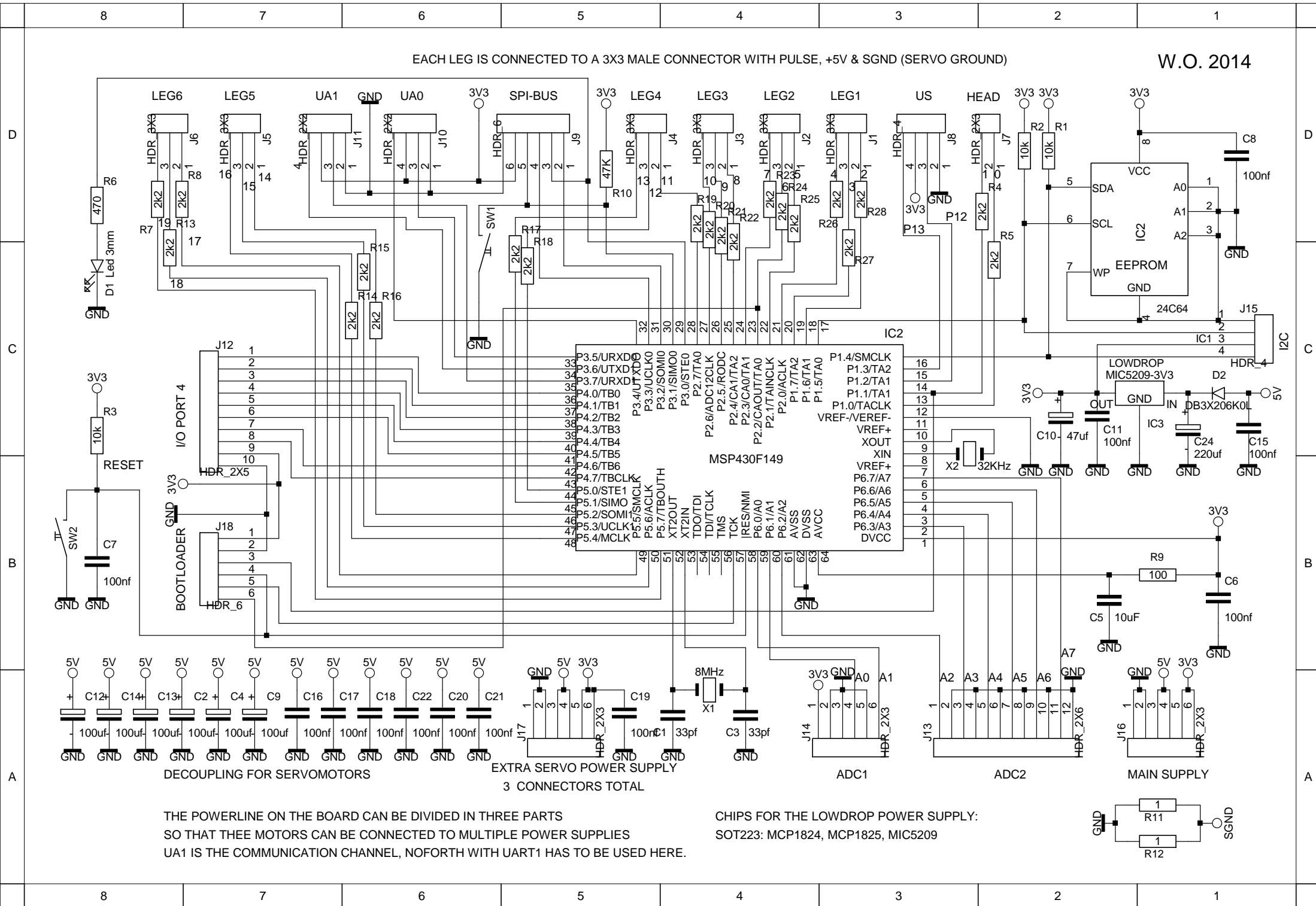
Hexapod

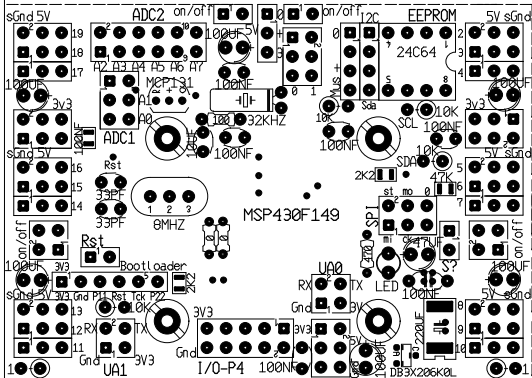
building plan

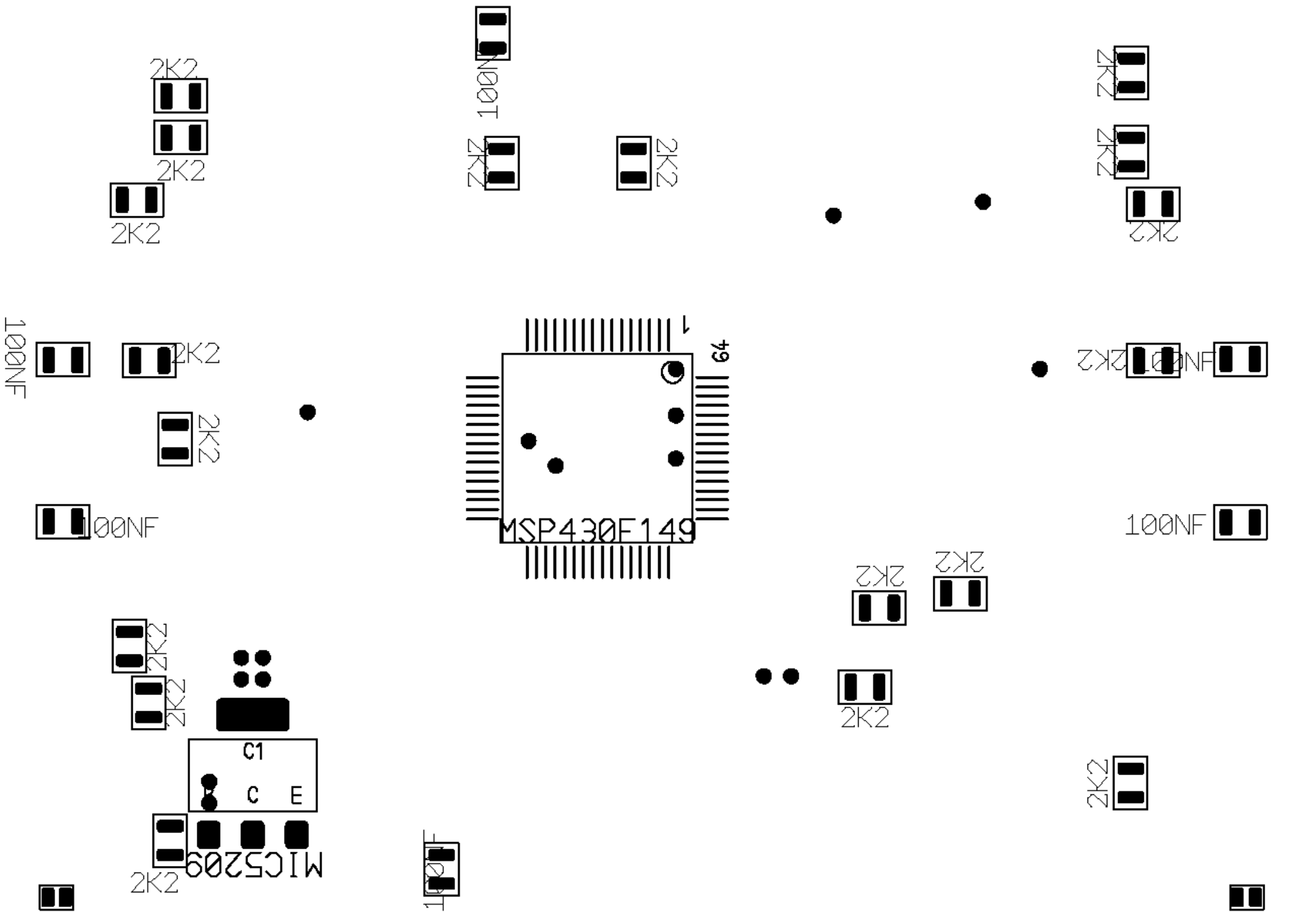


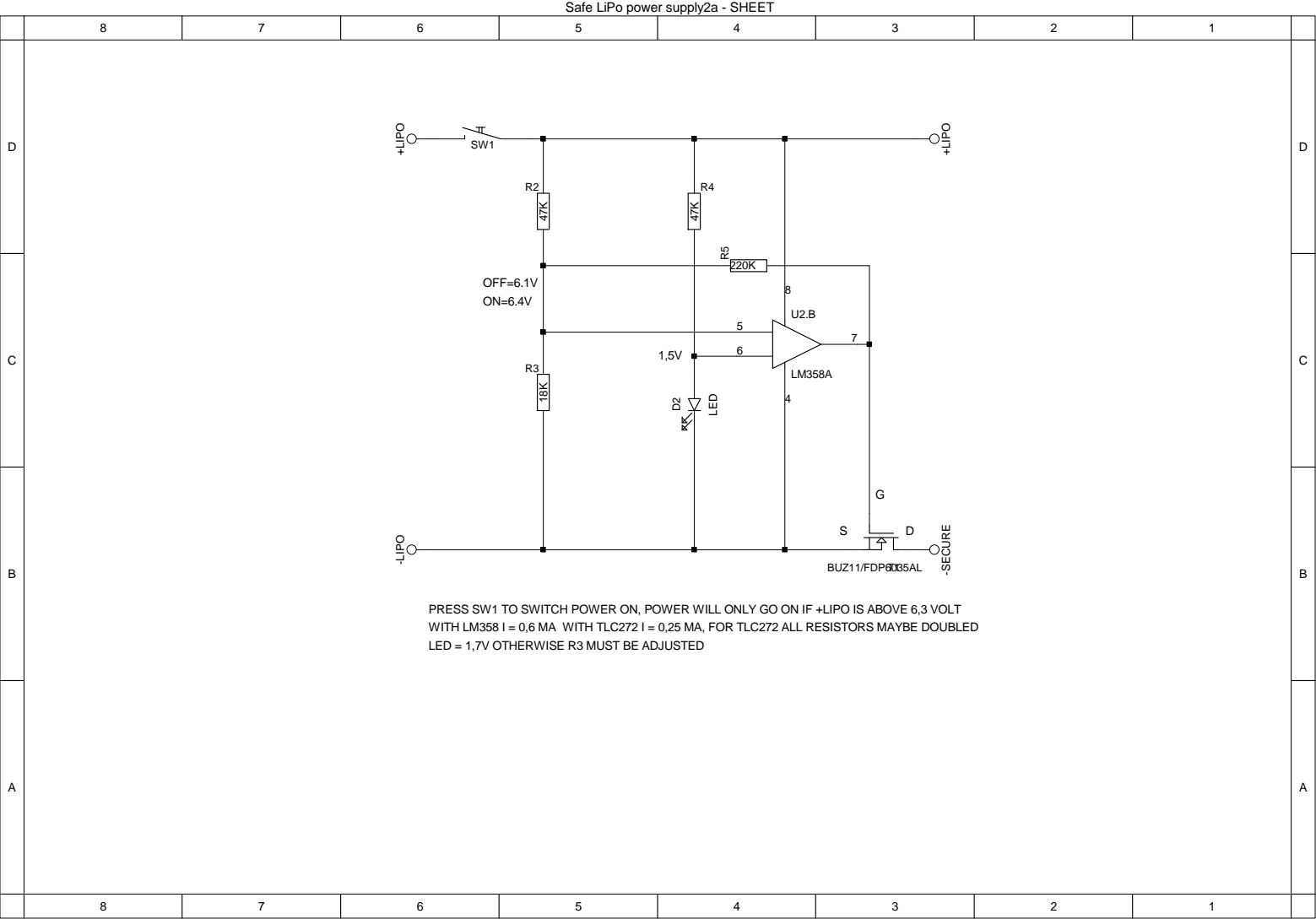
Hexapod version-1

Version-1

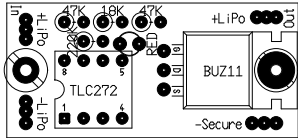


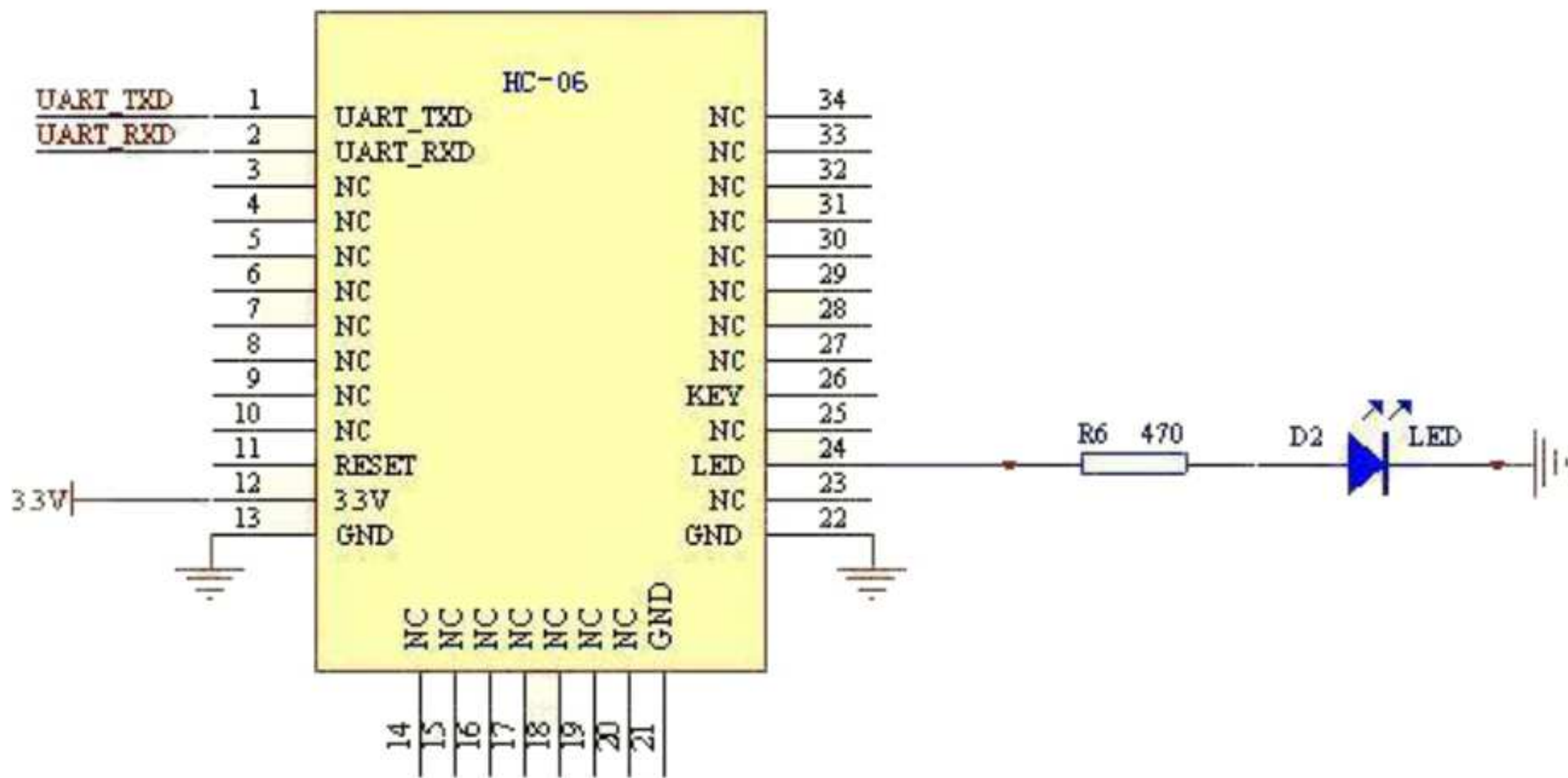






	8	7	6	5	4	3	2	1		
D	<p> OFF=6.1V ON=6.4V </p> <p> U2.B LM358A </p> <p> D2 LED </p> <p> BUZ11/FDP0035AL </p> <p> -LIPO </p> <p> +LIPO </p> <p> -SECURE </p> <p> PRESS SW1 TO SWITCH POWER ON, POWER WILL ONLY GO ON IF +LIPO IS ABOVE 6,3 VOLT WITH LM358 I = 0,6 MA WITH TLC272 I = 0,25 MA, FOR TLC272 ALL RESISTORS MAYBE DOUBLED LED = 1,7V OTHERWISE R3 MUST BE ADJUSTED </p>									D
C										C
B										B
A										A
	8	7	6	5	4	3	2	1		





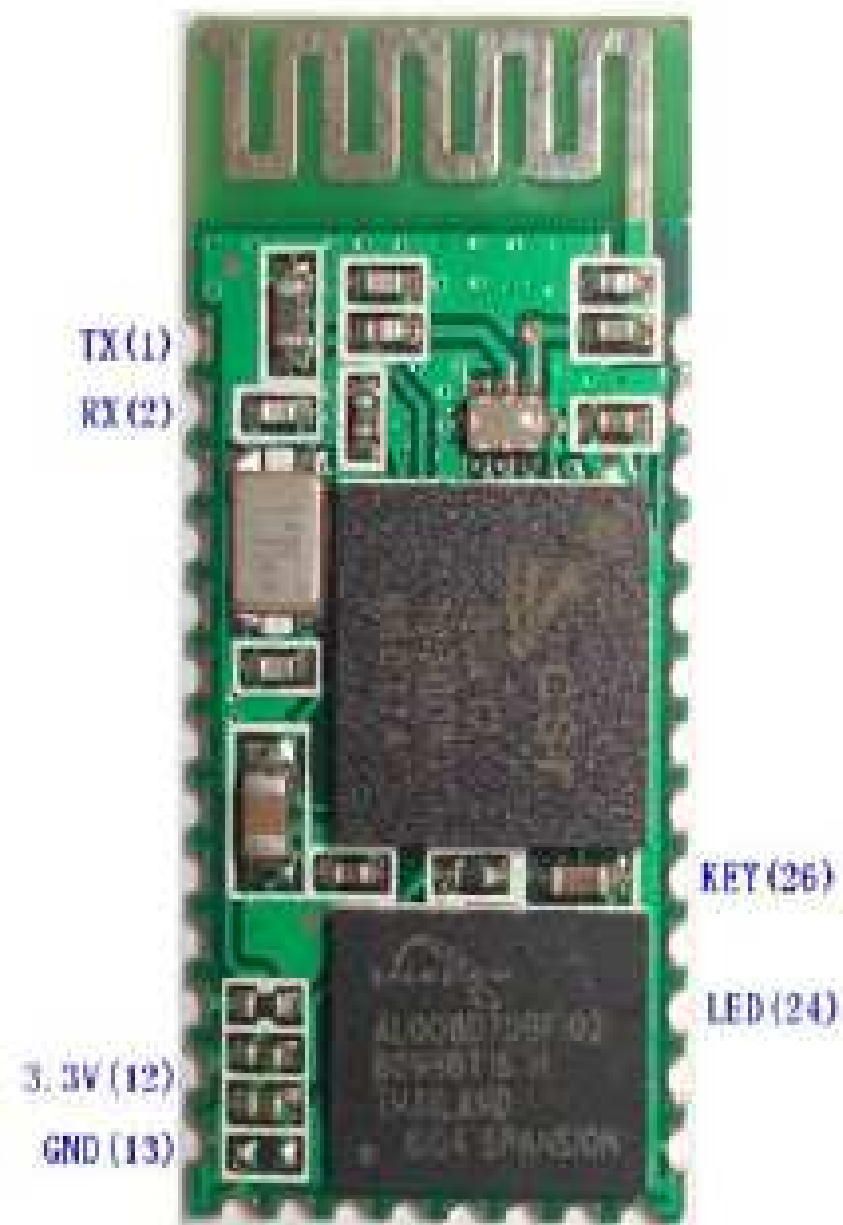


Figure 1 HC-06

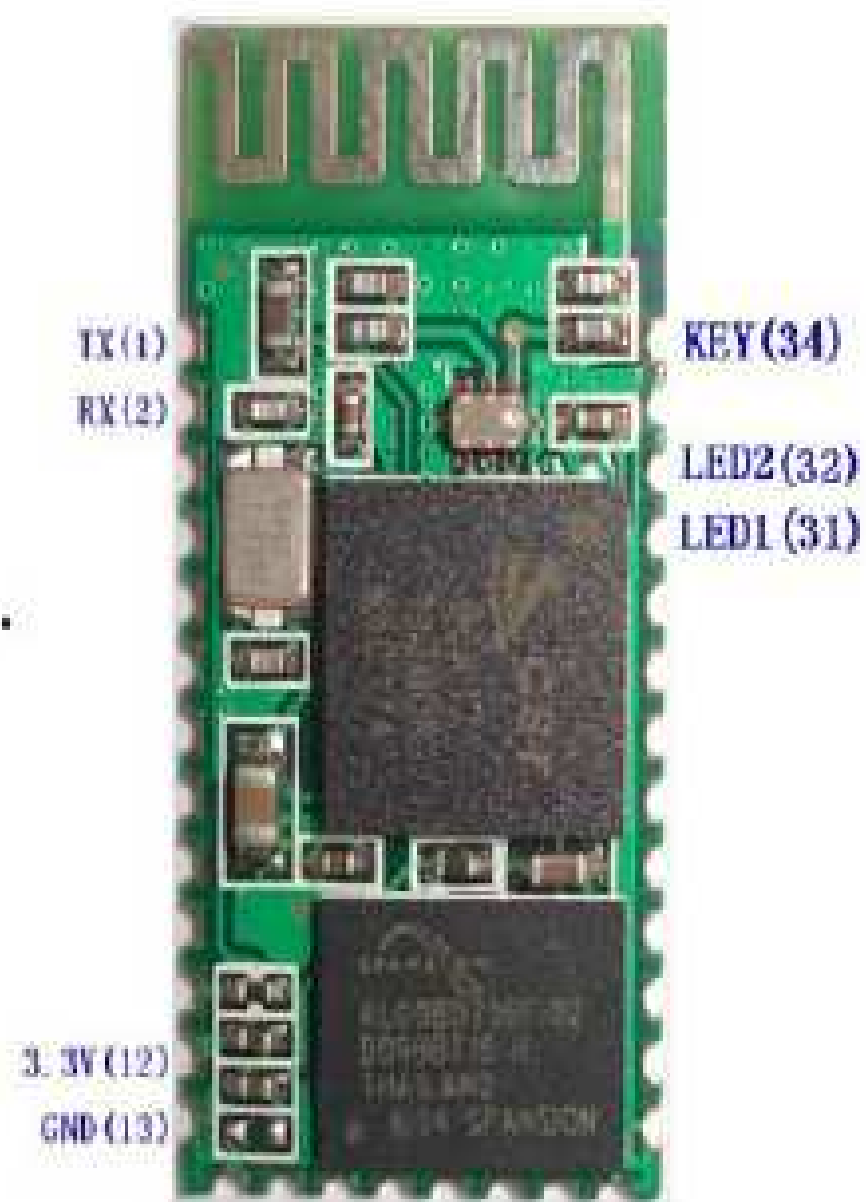


Figure 2 HC-05

Bluetooth
W.O. 2015
HC06

26

22

470

1

LED

10K

100N

RX TX 0 3V3

1

2

13

CONN

JP